


Sundance® Spas



Contents

Innovations	2
Our Promise to You	4
Sundance® Spas Global	6
Good Cause Spas™	8
Patented Fluidix® Jets	10
Fluidix® Jets by Series	14
Clean Water	16
Craftsmanship	18
SmartTub™ System	20
980™ Series	22
880™ Series	28
780™ Series	34
680™ Series	36
Spa Specifications	38
Color Palette	46
Genuine Parts & Accessories	48





At Sundance® Spas, we think you should

*do more of what
matters to you*

And with over 40 years of experience crafting high quality spas, we take pride in helping people spend time meaningfully. So go ahead and relax more. Let your mind wander. Savor each and every moment. Celebrate life. Start your #SundanceLife today. You deserve it.

Innovations



Electronic Controls

Simple backlit controls for easy spa operation

1984



SlipStream™ Filtration

Skims more buildup-producing debris than standard filtration systems

1986



Rigid Bond™ Shell

Three layers create a strong, scratch-resistant shell

1988



Accu-Sage™ Seat

Customer-favorite seat delivers full-body immersive experience

1991



SunScents™ Aromatherapy

Added relaxation through a built-in aromatherapy dispensing system

1992





MicroClean® Filtration

Superior horizontal position removes the tiniest particles for cleanest, clearest water

2002



Dynamic Flow™ Pump

Circulation pump filters and treats more water per minute for cleaner water faster

2005



CLEARRAY Active Oxygen™ System

Uses the power of nature-inspired ozone+UV-C to work harder and clean your water longer

2020



Patented Fluidix® Jets

Fluid dynamics principles make water and air feel exceptional

2003



SmartTub™ System

Making it easier than ever to use, monitor, and maintain your spa from your smart device

2018



Revolutionizing the Spa Industry

Our Promise to You

Connection

Our products provide an environment where you can nurture relationships and enhance your life, bringing social circles together and couples and families closer. By removing you from life's distractions, our spas give you exactly what you need to be your true self.

Loyalty

Built on trust and a commitment to excellence, the relationship we have with our customers will always be our foundation. By carefully selecting each of our dealers, we can ensure that you are enjoying outstanding products and services that reinforce the reputation we have earned over several decades.

Craftsmanship

We want you to relax when you're in your Sundance® spa. So we give you the confidence that your spa has everything you need and nothing you don't. Backed by personal experience, a solid reputation for reliability and the best dealer network, you can focus on distraction-free interactions with those that mean most to you.





*It's more than a spa
it's a way of life*

"The quality, design and performance of the spa is exceptional. I look forward to using it almost everyday for relaxation and sleep enhancement, as well as the hydrotherapy benefits for a lower back injury."

- Ron R.

Sundance® Optima® 880™ Series Owner



"It is so far superior to the old spa we had which was part of our pool as it actually has jets you can control and there are four great seats to choose from."

- Norm E.

Sundance® Optima® 880™ Series Owner



Once you experience it, you'll see why owners buy again and again: life is better with a Sundance® spa.

Start your own **#SundanceLife** and join in the conversation.



Sundance® Spas Global

Sundance® Spas can be found in more than 750 retail locations in 75 countries worldwide.

Algeria	Hong Kong	Panama
Argentina	Hungary	Philippines
Australia	Iceland	Poland
Austria	India	Portugal
Belarus	Indonesia	Puerto Rico
Belgium	Ireland	Romania
Bosnia/Herzegovina	Israel	Russia
Bulgaria	Italy	Singapore
Canada	Japan	Slovakia
Canary Islands	Kenya	Slovenia
Chile	Latvia	Spain
China	Liechtenstein	South Korea
Costa Rica	Lithuania	Sri Lanka
Croatia	Luxembourg	St. Vincent
Cyprus	Malaysia	Sweden
Czech Republic	Maldives	Switzerland
Denmark	Malta	Taiwan
Egypt	Mexico	Turkey
Estonia	Montenegro	Thailand
Finland	Morocco	Ukraine
France	Netherlands	United Kingdom
French Polynesia	Netherlands Antilles	United States
Germany	New Zealand	Uruguay
Greece	Nigeria	Vietnam
The Grenadines	Norway	Virgin Islands





Good Cause Spas™

Whether helping generations of families come together or giving back to those who give so much, supporting good causes in our communities simply feels like the perfect fit.

Please join Sundance® Spas and the Good Cause Spas™ movement in our support of the many worthy organizations that strive to help our neighbors, heroes, and champions.



Learn how Sundance® Spas supports good causes in the community by visiting:
www.GoodCauseSpas.com

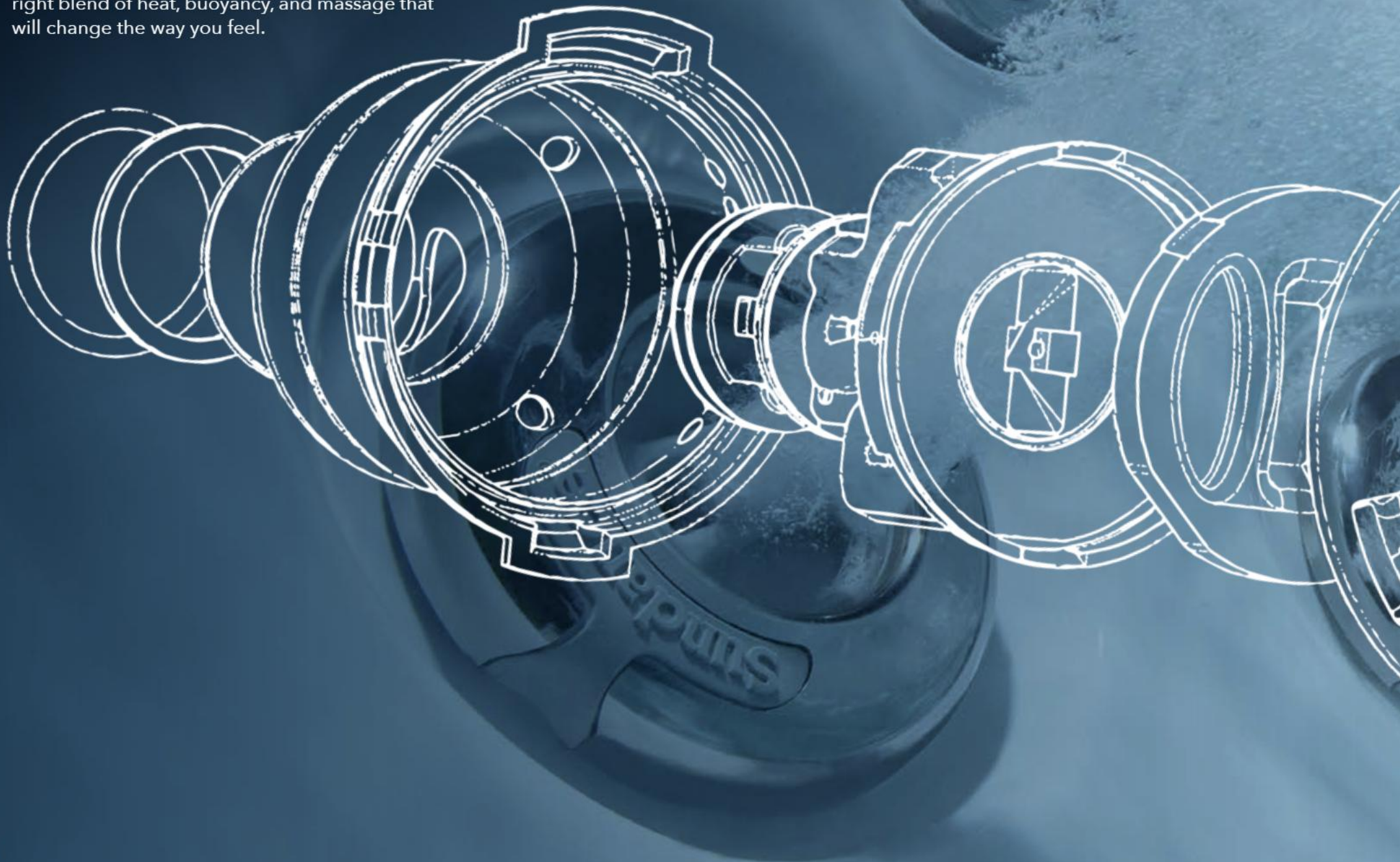


Sundance® Spas donates a spa to WISH for OUR HEROES for every 100 Sundance® spas sold at each participating dealer location in a single calendar year. Please join us in celebrating the dealers that helped contribute to this worthy cause.



Patented Fluidix[®] Jets

As you surrender to the warm, bubbly water of a Sundance[®] spa, you'll be whisked away by the right blend of heat, buoyancy, and massage that will change the way you feel.



Fluid Dynamics

Principles

Patented Fluidix® jets were co-developed with Bowles Fluidics Corp, experts in the movement of liquids and gases.

That's why a massage in a Sundance® spa feels different than anything you've experienced before. Delivering power, motion, and massage, you'll be whisked away by the customized experience that's perfect for you.

Fluidix® jets operate without bearings that can clog or parts that wear out, combining air and water to create highly refined massage sensations. Each jet is positioned to reach pressure points used in reflexology and acupressure so stress and strain can be a distant memory.

Power,

Motion,

Massage.

*available in select models



Patented Fluidix® Jets

Adjust the position of the Fluidix® jet to change the air flow from a wave-like oscillation to a focused stream of water.





Surrender to the Perfect Massage

Even if you don't know the difference between Swedish massage and Shiatsu, you'll be enchanted by the variety of massage combinations Sundance® spas deliver. Every Fluidix® jet is assigned a distinct role, uniquely designed to simulate a specific massage action. Air-only jet streams feel like delicate fingers massaging soft tissues. Other jets act more like strong hands deeply kneading large muscles. Some even mimic the rapid, stimulating techniques of Eastern massage therapies.

Regardless of which Fluidix® jet combination you call your favorite, you can get a personal massage from your Sundance® spa.

Fluidix® Jets by Series

Deep Tissue

Pressure Point

880™ & 980™
series

Maximum Massage
Coverage



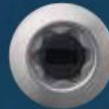
WHIRLPOOL JET
Adjustable, vigorous, deep muscle-penetrating massage known for its boldness.



FLUIDIX® INTELLI-JET™
Adjustable water flow and oscillating direction for a custom deep tissue massage.



VORTEX™ JET
Adjustable rifling action delivers swirling sensation for high and low impact therapeutic massage.



FLUIDIX® ST™ JET
Focused, deep-tissue jet stream adjustable for intensity and pressure.



ACCU-PRESSURE™ JET
Deep-tissue massage to relieve muscle tension and joint pain.



FOCUS RELIEF® JET
Soothing bubbles for either a concentrated deep tissue massage or soft tissue effervescent effect.



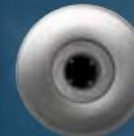
PULSATOR™ JET
Pulsing massage action to reduce discomfort of carpal tunnel syndrome in wrists.

780™
series

Comprehensive
Massage Experience



VORTEX™ JET
Adjustable rifling action delivers swirling sensation for high and low impact therapeutic massage.



MINI VORTEX™ JET
Utilizes high-impact and low-impact targeted stream of water with unique rifling action adjustable for optimal massage.



ADJUSTABLE ACCU-PRESSURE™ JET
Adjustable deep tissue jet offers more control over your therapeutic experience.



SMT™ MICRO JET
Small, targeted massage to ease neck tension.



ACCU-PRESSURE™ JET
Deep-tissue massage to relieve muscle tension and joint pain.

Muscle Release



FLUIDIX® REFLEX™ JET

Adjustable, back and forth Swedish-style massage motion to increase circulation and relax your body.



FLUIDIX® NEX™ JET

Adjustable to relieve neck tension and strain in small muscles and sensitive nerves.



SMT™ FLUIDIX® JET

Medium, spiral-action massage to ease tension-prone areas in small muscle groups and joints.

Relaxation



SILENT AIR® INJECTOR JET

Injects a small, gentle stream of bubbles in the water that also diffuse the SunScents™ fragrance aromatherapy system.



The Art of Relaxation



Deep Tissue

STRESS-RELIEF

Everyday stress can create muscle tension and restrict blood flow, causing headaches, sleeplessness, fatigue and soreness. Hydrotherapy is an effective solution to free your stress.



Pressure Point

RENEWAL

By getting a break from the pace of our lives and submersing in an emotional sanctuary, you can relax, rejuvenate and rehabilitate your body, mind, and soul.



Muscle Release

HEALING

Sundance® Spas continues the tradition of using the restoring properties of water and massage to provide relief and rejuvenation to repair muscles faster.



Relaxation

CHROMATHERAPY

Light has a profound effect on our moods and peace of mind. Chromatherapy, also known as color therapy, uses individual colors in the spectrum to boost and balance energy in your body.



Relaxation

AROMATHERAPY

Without lessening water quality, Sundance® SunScents™ are injected into bubbles and then released when they come to the surface, leaving you feeling renewed.

Clean Water

UV-C technology gives you the choice to add the right dose of chlorine or bromine to meet your needs. Regardless of whether you choose chlorine or bromine, we combine ozone and UV-C technology to offer the most powerful clean water system available.

Step 1: Filtration Systems



Dynamic Flow™ circulation pump

This leading energy-efficient high volume pump filters and treats more water per minute through the system than a low volume pump for cleaner water faster.



SlipStream™ weir gate

Extra wide weir gate floats with the water level to skim more build up-producing debris than standard filtration systems. Compatible with SunPurity™ Minerals for additional water sanitization.



Proprietary horizontal filter

Unlike traditional filtration systems, the horizontal position of the pleated filter allows water to flow through the entire filter to remove the tiniest particles in the water for cleanest, clearest water.

Filtration System by Series



MicroClean® Ultra Filtration System

980™ series 880™ series



MicroClean® Filtration System

780™ series



Traditional Filtration System

680™ series



CLEARARRAY ACTIVE OXYGEN™ — CLEAN WATER SYSTEM —

The CLEARARRAY Active Oxygen™ System injects a low dose of ozone into the water before it passes by the UV-C light, energizing active oxygen molecules to work harder to clean the water longer. This advanced oxidation process naturally activates active oxygen molecules, breaking up contaminants and eliminating up to 99.99% of waterborne pathogens. The CLEARARRAY Active Oxygen™ Clean Water System is standard on all acrylic spas.

Step 2: Water Care Technology

Process

1. An ozonator generates and injects a low output ozone gas into the spa water for minimal off-gassing to prolong life of equipment longer than traditional ozone systems.
2. Through a comprehensive mixing process that ensures maximum saturation of ozone into the spa water, the ozone will attach itself to microorganisms and harmful chemicals that exist in the spa water.
3. Ozonated water is then exposed to a UV-C bulb to energize the molecules and unlock active oxygen through an advanced oxidation process.
4. Powerful active oxygen molecules destroy contaminants and treats 99.9% of waterborne pathogens to cleanse the water.
5. The clean, clear water is then pumped back into the hot tub where it continues to clean the rest of the spa water, breaking down the contaminants so it can be easily be removed through the filters.

Components

Automatic Oxidizer

- Ozone does the heavy lifting of oxidizing organic contaminants allowing sanitizer to work for a longer period of time
- Ozone helps reduce the amount of dissolved solids in the water, allowing for UV-C light to work more effectively by removing particles that can absorb or scatter UV-C-light.
- Ozone sanitization is widely used in water treatment plants

UV-C Light

- UV-C light is a natural part of the spectrum of electromagnetic energy generated by the sun
- Effectively interacts with the DNA of bacteria and viruses, destroying their ability to reproduce
- Is a natural process that adds no by-product to your water
- Utilizes a durable stainless steel and quartz components
- Requires an annual bulb replacement
- Is the same technology used in bottled drinking water, aquariums, and hospitals

Step 3: Water Balancers



Water Balancers

Sundance® Spas, the trusted leader in spa technology, offers a complete line of genuine water care products that are backed by the quality, innovation and service that you expect from our brand.



SunPurity™ PLUS

A very effective water enhancer that boosts system and sanitizer performance and provides a full system cleanse.

Craftsmanship

Every element* is designed specifically for your Sundance® spa for quality and reliability that's built in.

Secure Cover

A properly-fitting cover protects your spa from debris and heat loss.

Fully Insulated

Protects against air, moisture and sound and reduces energy required to run the spa.

Efficient Heater

Heating element transfers heat to the water, increasing thermal efficiency and resisting corrosion.

Rigid Bond™ Shell

Proprietary shell manufacturing process makes acrylic stronger and increases thermal retention properties.

Tool-free Access

Easily access the drain and critical components in your spa without tools, saving time and making maintenance trouble-free.

SunStrong® and SunSide™ Cabinet

High quality, UV-resistant synthetic cabinetry is durable and low maintenance.

Synthetic Base

Provides a solid foundation impervious to nature, moisture and the elements.

Additional Features

- SmartTub™ System
- CLEARRAY Active Oxygen™ Clean Water System
- Quick Drain™ Feature
- EcoWrap® Insulation



Sundance Spas

built with you in mind™

on • Indicator Light • Intelligent Controls

Simplified Spa Ownership at Your Fingertips

The exclusive SmartTub™ system is designed to make using, maintaining, and monitoring your spa effortless. From an app on your smart device, you can enjoy the next generation of spa ownership.*





SmartTub™



CUSTOMIZE YOUR SETTINGS

- Control energy savings and filtration
- Change temperature, lighting, and jets
- Manage your vacation home spa



REMOTE MONITORING

- Sends alerts and diagnostics to the dealer
- Delivers live energy usage data and reports
- Relays power outage notifications



EASY TO USE

- Always connected with cellular based service
- Activate spa with your Smart Home device
- Access personalized tips and how-to videos
- Connect with your dealer for added support
- Shop accessories and water care supplies



SmartTub™ system uses cellular-based communication and requires cell service from our provider partner in your area. See website for details.

*Requires subscription beginning in second year of ownership.

980TM Series

PREMIUM FEATURES



- Up to 10 jet varieties
- Patented Fluidix® Jets
- Stainless steel jet trim
- Specialty Silent Air® injector jets
- MicroClean® Ultra filtration system
- Premium accents
- Integrated interior lighting
- Accent lighting
- Tool-free cabinetry
- SunCooler™ cold storage
- Wide sheet waterfall
- i-Touch control
- Quick drain
- Synthetic base
- Dynamic Flow™ circulation pump
- SmartTub™ system

Changing the way



you enjoy your spa



980™

Series



Founded upon consumer-favorite Sundance® spa features and laced with never-before-seen design and style, the 980™ Series will change the way you enjoy your spa.



Kingston™



Claremont®



Lisbon®



Odessa®





DESIGN

- Geometric exterior cabinetry highlighted by architectural corner lighting
- Lounge deck with SunCooler™ cold storage areas
- Low profile for easy entry and exit for soakers of any age

EXPERIENCE

- Spacious seats highlighted by LED lighting
- Patented Fluidix® jets and up to 10 massage varieties
- Upgraded Accu-Ssage™ therapy seat
- Specialty Silent Air® injector jets

WATER CARE

- MicroClean® Ultra Filtration System
- Slipstream™ skimmer
- CLEARRAY Active Oxygen™ Clean Water System
- CLEARRAY® On-Demand

FEATURES

- Glass i-Touch control for easy use day or night
- Tool-free cabinetry removal
- Robust synthetic base
- SunStrong® Extreme cover
- SmartTub™ System
- SunScents™ aromatherapy (scents sold separately)

UPGRADES

- Integrated BLUEWAVE® stereo (optional)
- Winter Wrap insulation (optional)

980TM Series



Interior Lighting



Spacious seats are highlighted by the even glow of LED lighting for beauty and safety



Advanced Control



Glass i-Touch Control with smart device functionality makes it even easier to use and enjoy your spa day or night





Geometric Cabinetry *Series Exclusive*

Crisp, rhythmic texture of the exterior cabinetry highlighted by corner lighting combines classic beauty and modern form



Additional Seating and Convenience *Series Exclusive*

A low profile, flat top rail and lounge deck offer more places to sit and socialize. SunCooler™ cold storage areas, integrated into the lounge deck, feature removable lid for easy fill, pump-assisted drain* and an internal light* for use day or night

*On select models

880™ Series

PREMIUM FEATURES



- Up to 10 jet varieties
- Patented Fluidix® Jets
- Stainless steel jet trim
- Specialty Silent Air® injector jets
- MicroClean® Ultra filtration system
- Premium accents
- Integrated interior lighting
- SunSide™ cabinetry
- Accent lighting
- Tool-free cabinetry
- Wide sheet waterfall
- Touch control
- Quick drain
- Synthetic base
- Dynamic Flow™ circulation pump
- SmartTub™ system-compatible



A woman with blonde hair, wearing a pink bikini, is relaxing in a white hot tub. The hot tub is situated outdoors, with a large, light-colored tree trunk to its left and a pond or stream to its right. The background features a rocky shoreline and lush greenery. The text "Thoughtful design and features you can't live without" is overlaid on the right side of the image.

Thoughtful design
and features
you can't
live without

880™ Series

See why Sundance® spa owners buy again and again. We are continuously innovating, and we've given the 880™ Series thoughtful design and features you can't live without.



Aspen®



Maxxus™



Optima®



Cameo®



Marin®



Cambria™



Altamar®



Capri®





EXPERIENCE

- Patented Fluidix® jets and up to 10 massage varieties
- Accu-Ssage™ therapy seat
- Specialty Silent Air® injector jets

WATER CARE

- MicroClean® Ultra Filtration System
- Slipstream™ skimmer
- CLEARARRAY Active Oxygen™ Clean Water System
- CLEARARRAY® On-Demand
- Silent Spa™ filtration

FEATURES

- i-Touch control with color screen
- Integrated LED lighting with external indicator light
- Premium metallic, illuminated accents
- Dual-purpose beverage concierge filter lid
- SunSide™ Cabinetry
- Exterior lighting
- Tool-free cabinetry for easy equipment access
- Synthetic base
- Illuminated grab bars
- Quick drain
- SunScents™ aromatherapy (scents sold separately)

UPGRADES

- Integrated BLUEWAVE® stereo (optional)
- SmartTub™ System (optional)
- EcoWrap® insulation (optional)
- SunStrong® Extreme Cover (optional)

880TM Series



MicroClean[®] Ultra Filtration System



MicroClean[®] Ultra Filtration System sets the standard for robust, efficient water filtration



i-Touch Control Panel



Spas often get the most use at night, so an advanced control amplifies ease of use. With a glowing, color, touch screen control and icon-driven menus programming your spa is even easier any time of day





Accu-Ssage™ Therapy Seat

Complete with arm rest, this customer favorite seat delivers relaxation to your neck, back, hips, calves, and wrists in our deepest, full-body immersion experience



Silent Air® Injector Jets



An exclusive blower and air-only jets deliver a soft tissue massage and optional SunScents™ aromatherapy for a soothing experience

780TM Series

Create your perfect backyard retreat

We believe the 780TM Series should enhance your life, so we combined new technologies with good old fashioned know-how to craft intuitive, well-rounded spas that are a delight to use.

EXPERIENCE

- Patented Fluidix[®] jets and up to 6 jet varieties
- SMT[™] therapy seat
- Accu-Pressure[™] therapy seat

FEATURES

- Streamlined digital control panel with illumination
- Enhanced LED lighting with external indicator light
- Tool-free cabinetry
- Synthetic base

WATER CARE

- MicroClean[®] Filtration System
- Slipstream[™] skimmer
- CLEARRAY Active Oxygen[™] Clean Water System
- CLEARRAY[®] On-Demand

UPGRADES

- BLUEWAVE[®] stereo (optional)
- SmartTub[™] system (optional)
- EcoWrap[®] insulation (optional)
- SunStrong[®] Extreme Cover (optional)

ENHANCED FEATURES

- Up to 6 jet varieties
- Patented Fluidix[®] Jets
- Stainless steel jet trim
- MicroClean[®] filtration system
- Stylized design touches
- Enhanced lighting
- Tool-free cabinetry
- Synthetic base
- Dynamic Flow[™] circulation pump
- SmartTub[™] system-compatible



Chelsea[®]



Hamilton[™]



Montclair[™]



Bristol[™]



Hanover[®]



Dover[™]





MicroClean® Filtration System



MicroClean® Filtration System makes it easy to keep your water clean and fresh



Streamlined Digital Control Panel

Illuminated control panel makes it easier to program your spa and puts CLEARRAY® On Demand right at your fingertips

680™

Series

Be immersed in total relaxation
The 680™ Series will make you feel good long after
you leave the water.

FEATURES

- Standard jets
- Adjustable massage options
- Traditional filtration system
- CLEARRAY Active Oxygen™ Clean Water System
- Simplified control panel

UPGRADES

- SunStrong® Extreme Cover (optional)
- SmartTub™ system (optional)



McKinley®



Ramona®



Edison®



Peyton™



Prado®



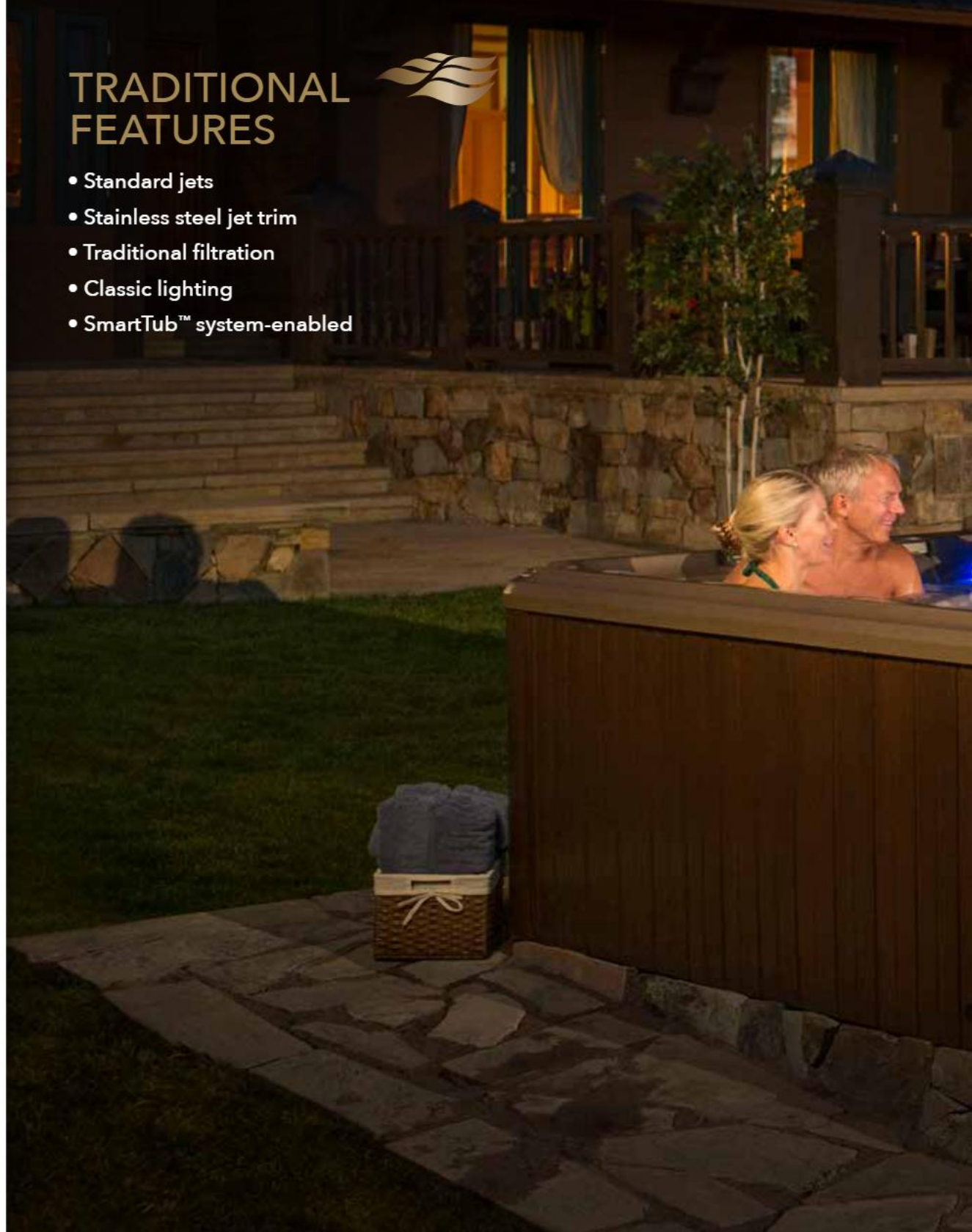
Alicia™

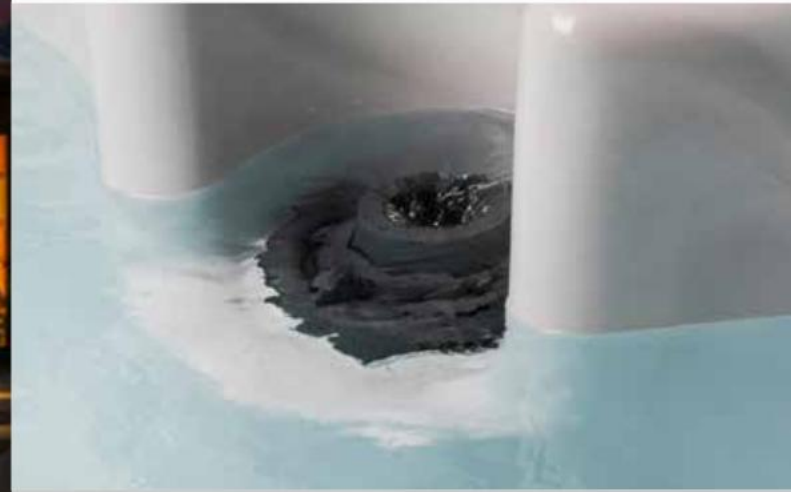


Denali®

TRADITIONAL FEATURES

- Standard jets
- Stainless steel jet trim
- Traditional filtration
- Classic lighting
- SmartTub™ system-enabled





Traditional Filtration System



50 square foot vertical filter raises the bar on traditional filtration



Simplified Control Panel

Streamlines spa functions to make it easy to focus on relaxation

980™ Series



Kingston™

Seats 6-7

7'8" x 8'4" x 34" (234 cm x 254 cm x 86 cm)

980™
series



DRY WEIGHT	1,048 lbs (475 kg)
TOTAL FILLED WEIGHT	5,310 lbs (2,409 kg)
AVERAGE SPA VOLUME	401 US gal (1,518 liters)
JET PUMPS	
NORTH AMERICA (60 Hz)	3x TheraMax™ 1-Speed 2.5 hp Continuous
EXPORT (50 Hz)	3x TheraMax™ 1-Speed 2.0 hp Continuous
TOTAL JETS	57 + 12 Air Injector Jets
AIR BLOWER	1.5 hp air pump
MASSAGE VARIETY	8

WATER SYSTEM	MicroClean® Ultra Filtration System
LIGHTING	Seat accent lights, waterfall, SunCooler™, exterior and underwater
ELECTRICAL REQUIREMENTS*	
NORTH AMERICA (60 Hz)	240 VAC @ 50A or 60A
EXPORT (50 Hz)	230 VAC @ 24A, 26A
TITANIUM COIL HEATER	5.5 kW ¹



SunCooler™



I-Touch Glass Control



Exterior Lighting



SmartTub™ System



Estimated Monthly Cost w/ Winter Package
\$15.98 **\$15.19**



Claremont®



Seats 5-6

7'8" x 8'4" x 34" (234 cm x 254 cm x 86 cm)

980™
series



DRY WEIGHT	1,045 lbs (474 kg)
TOTAL FILLED WEIGHT	5,348 lbs (2,426 kg)
AVERAGE SPA VOLUME	405 US gal (1,533 liters)
JET PUMPS	
NORTH AMERICA (60 Hz)	3x TheraMax™ 1-Speed 2.5 hp Continuous
EXPORT (50 Hz)	3x TheraMax™ 1-Speed 2.0 hp Continuous
TOTAL JETS	59 + 6 Air Injector Jets
AIR BLOWER	1.5 hp air pump
MASSAGE VARIETY	10

WATER SYSTEM	MicroClean® Ultra Water Management
LIGHTING	Seat accent lights, waterfall, SunCooler™, exterior and underwater
ELECTRICAL REQUIREMENTS*	
NORTH AMERICA (60 Hz)	240 VAC @ 50A or 60A
EXPORT (50 Hz)	230 VAC @ 24A, 26A
TITANIUM COIL HEATER	5.5 kW ¹



SunCooler™



I-Touch Glass Control



Exterior Lighting



SmartTub™ System



Estimated Monthly Cost w/ Winter Package
\$14.90 **\$13.82**

¹2.7 kW on 50 Hz export spas.

*See manual for more configurations

980™ Series



Odessa®

Seats 6-7

7'5" x 7'5" x 34" (226 cm x 226 cm x 86.4 cm)

980™
series



DRY WEIGHT	813 lbs (369 kg)
TOTAL FILLED WEIGHT	4,658 lbs (2,113 kg)
AVERAGE SPA VOLUME	341 US gal (1,291 liters)
JET PUMPS	
NORTH AMERICA (60 Hz)	2x TheraMax™ 1-Speed 2.5 hp Continuous
EXPORT (50 Hz)	2x TheraMax™ 1-Speed 2.0 hp Continuous
TOTAL JETS	37 + 10 Air Injector Jets
AIR BLOWER	1.5 hp air pump
MASSAGE VARIETY	8
<hr/>	
WATER SYSTEM	MicroClean® Ultra Filtration System
LIGHTING	Seat accent lights, waterfall, exterior and underwater
ELECTRICAL REQUIREMENTS*	
NORTH AMERICA (60 Hz)	240 VAC @ 50A or 60A
EXPORT (50 Hz)	230 VAC @ 24A, 26A
TITANIUM COIL HEATER	5.5 kW ¹



SunCooler™



i-Touch Glass Control



Exterior Lighting



SmartTub™ System



Estimated Monthly Cost w/ Winter Package
\$12.46 **\$11.30**



Lisbon®

Seats 5-6

7'5" x 7'5" x 34" (226 cm x 226 cm x 86.4 cm)



980™
series



DRY WEIGHT	819 lbs (371 kg)
TOTAL FILLED WEIGHT	4,822 lbs (2,187 kg)
AVERAGE SPA VOLUME	370 US gal (1,401 liters)
JET PUMPS	
NORTH AMERICA (60 Hz)	2x TheraMax™ 1-Speed 2.5 hp Continuous
EXPORT (50 Hz)	2x TheraMax™ 1-Speed 2.0 hp Continuous
TOTAL JETS	44 + 8 Air Injector Jets
AIR BLOWER	1.5 hp air pump
MASSAGE VARIETY	9
<hr/>	
WATER SYSTEM	MicroClean® Ultra Water Management
LIGHTING	Seat accent lights, waterfall, exterior and underwater
ELECTRICAL REQUIREMENTS*	
NORTH AMERICA (60 Hz)	240 VAC @ 50A or 60A
EXPORT (50 Hz)	230 VAC @ 24A, 26A
TITANIUM COIL HEATER	5.5 kW ¹



SunCooler™



i-Touch Glass Control



Exterior Lighting



SmartTub™ System



Estimated Monthly Cost w/ Winter Package
\$14.54 **\$12.38**

¹2.7 KW on 50 Hz export spas.

*See manual for more configurations

Seats 6+



Aspen®

Seats 7-8

7'7" x 9'2" x 41.5" (231 cm x 280 cm x 106 cm)

880™
series



DRY WEIGHT	1,154 lbs (523 kg)
TOTAL FILLED WEIGHT	6,784 lbs (3,077 kg)
AVERAGE SPA VOLUME	520 US gal (1,968 liters)
JET PUMPS	
NORTH AMERICA (60 Hz)	3 TheraMax™ 2.5 hp (5.1 bhp ²)
EXPORT (50 Hz)	3 TheraMax™ 2.0 hp (2.6 bhp ²)
TOTAL JETS	66 + 14 Air Injector Jets
AIR BLOWER	1.5 hp air pump
MASSAGE VARIETY	8

WATER SYSTEM	MicroClean® Ultra Filtration System
LIGHTING	Integrated
ELECTRICAL REQUIREMENTS*	
NORTH AMERICA (60 Hz)	240 VAC @ 50A or 60A
EXPORT (50 Hz)	230 VAC @ 24A, 26A
TITANIUM COIL HEATER	5.5 kW

 Estimated Monthly Cost **\$19.22** w/ EcoWrap® **\$13.68**



Maxxus™

Seats 6

7'7" x 9'2" x 41.5" (231 cm x 280 cm x 106 cm)



880™
series



DRY WEIGHT	1,143 lbs (518 kg)
TOTAL FILLED WEIGHT	6,898 lbs (3,129 kg)
AVERAGE SPA VOLUME	540 US gal (2,044 liters)
JET PUMPS	
NORTH AMERICA (60 Hz)	3 TheraMax™ 2.5 hp (5.1 bhp ²)
EXPORT (50 Hz)	3 TheraMax™ 2.0 hp (2.6 bhp ²)
TOTAL JETS	65 + 6 Air Injector Jets
AIR BLOWER	1.5 hp air pump
MASSAGE VARIETY	9

WATER SYSTEM	MicroClean® Ultra Filtration System
LIGHTING	Integrated
ELECTRICAL REQUIREMENTS*	
NORTH AMERICA (60 Hz)	240 VAC @ 50A or 60A
EXPORT (50 Hz)	230 VAC @ 24A, 26A
TITANIUM COIL HEATER	5.5 kW

 Estimated Monthly Cost **\$18.79** w/ EcoWrap® **\$15.48**



Optima®

Seats 6-7


7'5" x 7'5" x 37.5" (226 cm x 226 cm x 96 cm)

880™
series



DRY WEIGHT	924 lbs (419 kg)
TOTAL FILLED WEIGHT	5,344 lbs (2,424 kg)
AVERAGE SPA VOLUME	410 US gal (1,552 liters)
JET PUMPS	
NORTH AMERICA (60 Hz)	2 TheraMax™ 2.5 hp (5.1 bhp ²)
EXPORT (50 Hz)	2 TheraMax™ 2.0 hp (2.6 bhp ²)
TOTAL JETS	47 + 14 Air Injector Jets
AIR BLOWER	1.5 hp air pump
MASSAGE VARIETY	8

WATER SYSTEM	MicroClean® Ultra Filtration System
LIGHTING	Integrated
ELECTRICAL REQUIREMENTS*	
NORTH AMERICA (60 Hz)	240 VAC @ 40A, 50A or 60A
EXPORT (50 Hz)	230 VAC @ 17A, 15A
TITANIUM COIL HEATER	5.5 kW ¹

 Estimated Monthly Cost **\$14.54** w/ EcoWrap® **\$11.45**

¹ 2.7 KW on 50 Hz export spas.

² Brake horsepower (bhp) is a maximum value measured by the motor manufacturer with no pump installed.

*See manual for additional configurations.

Seats 6+



Chelsee®

Seats 6-7

7'5" x 7'5" x 36" (226 cm x 226 cm x 92 cm)

DRY WEIGHT	873 lbs (396 kg)
TOTAL FILLED WEIGHT	5,210 lbs (2,363 kg)
AVERAGE SPA VOLUME	400 US gal (1,514 liters)
TOTAL JETS	40
MASSAGE VARIETY	6

 Estimated Monthly Cost	w/ EcoWrap®
\$16.92	\$12.96

780™
series



WATER SYSTEM	MicroClean® Filtration System
LIGHTING	Enhanced
JET PUMPS	
NORTH AMERICA (60 Hz)	2 TheraMax™ 2.5 cont hp (5.1 bhp) ²
EXPORT (50 Hz)	2 TheraMax™ 2.0 cont hp (2.6 bhp) ²
ELECTRICAL REQUIREMENTS*	
NORTH AMERICA (60 Hz)	240 VAC @ 40A, 50A or 60A
EXPORT (50 Hz)	230-240 VAC @ 20A, 30A or 40A
STAINLESS STEEL HEATER	5.5 kW ¹



Hanover®

Seats 6

7' x 7' x 36" (213 cm x 213 cm x 92 cm)

DRY WEIGHT	740 lbs (336 kg)
TOTAL FILLED WEIGHT	4,368 lbs (1,981 kg)
AVERAGE SPA VOLUME	355 US gal (1,344 liters)
TOTAL JETS	34
MASSAGE VARIETY	6

 Estimated Monthly Cost	w/ EcoWrap®
\$12.38	\$10.87

780™
series



WATER SYSTEM	MicroClean® Filtration System
LIGHTING	Enhanced
JET PUMPS	
NORTH AMERICA (60 Hz)	2 TheraMax™ 2.5 cont hp (4.8 bhp) ²
EXPORT (50 Hz)	2 TheraMax™ 2.0 cont hp (3.0 bhp) ²
ELECTRICAL REQUIREMENTS*	
NORTH AMERICA (60 Hz)	240 VAC @ 40A, 50A or 60A
EXPORT (50 Hz)	230-240 VAC @ 20A, 30A or 40A
STAINLESS STEEL HEATER	5.5 kW ¹



McKinley®

Seats 6-7

7'5" x 7'5" x 36" (226 cm x 226 cm x 92 cm)

DRY WEIGHT	778 lbs (353 kg)
TOTAL FILLED WEIGHT	5,115 lbs (2,320 kg)
AVERAGE SPA VOLUME	410 US gal (1,552 liters)
TOTAL JETS	44

 Estimated Monthly Cost	
\$14.98	

680™
series



WATER SYSTEM	Traditional Filtration
LIGHTING	Classic
JET PUMPS	
NORTH AMERICA (60 Hz)	2-speed 2.5 hp (4.5 bhp) ² 1-speed 2.5 hp (4.8 bhp) ²
EXPORT (50 Hz)	2-speed 2.0 hp (2.6 bhp) ² 1-speed 2.0 hp (3.0 bhp) ²
ELECTRICAL REQUIREMENTS*	
NORTH AMERICA (60 Hz)	240 VAC @ 40A, 50A or 60A
EXPORT (50 Hz)	230 VAC @ 20A, 30A or 40A
STAINLESS STEEL HEATER	5.5 kW ¹



Edison®

Seats 6

7' x 7' x 36" (214 cm x 214 cm x 92 cm)

DRY WEIGHT	758 lbs (344 kg)
TOTAL FILLED WEIGHT	4,511 lbs (2,046 kg)
AVERAGE SPA VOLUME	350 US gal (1,325 liters)
TOTAL JETS	35

 Estimated Monthly Cost	
\$13.90	

680™
series



WATER SYSTEM	Traditional Filtration
LIGHTING	Classic
JET PUMPS	
NORTH AMERICA (60 Hz)	2-speed 2.5 hp (4.5 bhp) ² 1-speed 2.5 hp (4.8 bhp) ²
EXPORT (50 Hz)	2-speed 2.0 hp (2.6 bhp) ² 1-speed 2.0 hp (3.0 bhp) ²
ELECTRICAL REQUIREMENTS*	
NORTH AMERICA (60 Hz)	240 VAC @ 40A, 50A or 60A
EXPORT (50 Hz)	230 VAC @ 20A, 30A or 40A
STAINLESS STEEL HEATER	5.5 kW ¹

¹ 2.7 KW on 50 Hz export spas.

² Brake horsepower (bhp) is a maximum value measured by the motor manufacturer with no pump installed.

*See manual for additional configurations.

Seats 5-6



Cameo® Seats 5-6

7'5" x 7'5" x 37.5" (226 cm x 226 cm x 96 cm)



880™
series



DRY WEIGHT	962 lbs (436 kg)
TOTAL FILLED WEIGHT	4,882 lbs (2,214 kg)
AVERAGE SPA VOLUME	370 US gal (1,401 liters)
JET PUMPS	
NORTH AMERICA (60 Hz)	2 TheraMax™ 2.5 hp (5.1 bhp ²)
EXPORT (50 Hz)	2 TheraMax™ 2.0 hp (2.6 bhp ²)
TOTAL JETS	54 + 6 Air Injector Jets
AIR BLOWER	1.5 hp air pump
MASSAGE VARIETY	10

WATER SYSTEM	MicroClean® Ultra Filtration System
LIGHTING	Integrated
ELECTRICAL REQUIREMENTS*	
NORTH AMERICA (60 Hz)	240 VAC @ 40A, 50A or 60A
EXPORT (50 Hz)	230 VAC @ 17A, 15A
TITANIUM COIL HEATER	5.5 kW ¹

Estimated Monthly Cost w/ EcoWrap®
\$14.04 **\$11.38**



Altamar® Seats 5-6

6'9" x 7'2" x 37.5" (206 cm x 219 cm x 96 cm)



880™
series



DRY WEIGHT	875 lbs (397 kg)
TOTAL FILLED WEIGHT	4,878 lbs (2,213 kg)
AVERAGE SPA VOLUME	390 US gal (1,476 liters)
JET PUMPS	
NORTH AMERICA (60 Hz)	2 TheraMax™ 2.5 hp (5.1 bhp ²)
EXPORT (50 Hz)	2 TheraMax™ 2.0 hp (2.6 bhp ²)
TOTAL JETS	41 + 8 Air Injector Jets
AIR BLOWER	1.5 hp air pump
MASSAGE VARIETY	9

WATER SYSTEM	MicroClean® Ultra Filtration System
LIGHTING	Integrated
ELECTRICAL REQUIREMENTS*	
NORTH AMERICA (60 Hz)	240 VAC @ 40A, 50A or 60A
EXPORT (50 Hz)	230 VAC @ 17A, 15A
TITANIUM COIL HEATER	5.5 kW ¹

Estimated Monthly Cost w/ EcoWrap®
\$13.68 **\$11.02**



Cambria™ Seats 6

6'4" x 7'7" x 34" (193 cm x 231 cm x 86 cm)

880™
series



DRY WEIGHT	772 lbs (364 kg)
TOTAL FILLED WEIGHT	4,108 lbs (1,863 kg)
AVERAGE SPA VOLUME	335 US gal (1,268 liters)
JET PUMPS	
NORTH AMERICA (60 Hz)	2 TheraMax™ 2.5 hp (5.1 bhp ²)
EXPORT (50 Hz)	2 TheraMax™ 2.0 hp (2.6 bhp ²)
TOTAL JETS	46 + 6 Air Injector Jets
AIR BLOWER	1.5 hp air pump
MASSAGE VARIETY	9

WATER SYSTEM	MicroClean® Ultra Filtration System
LIGHTING	Integrated
ELECTRICAL REQUIREMENTS*	
NORTH AMERICA (60 Hz)	240 VAC @ 40A, or 50A
EXPORT (50 Hz)	230 VAC @ 10A, 15A
TITANIUM COIL HEATER	5.5 kW ¹

Estimated Monthly Cost w/ EcoWrap®
\$12.82 **\$9.86**

¹ 2.7 KW on 50 Hz export spas.

² Brake horsepower (bhp) is a maximum value measured by the motor manufacturer with no pump installed.

*See manual for additional configurations.

Seats 5-6



Hamilton™

Seats 5-6

7'5" x 7'5" x 36" (226 cm x 226 cm x 92 cm)



780™ series



DRY WEIGHT	826 lbs (375 kg)
TOTAL FILLED WEIGHT	4,996 lbs (2,266 kg)
AVERAGE SPA VOLUME	393 US gal (1,488 liters)
TOTAL JETS	41
MASSAGE VARIETY	6

Estimated Monthly Cost w/ EcoWrap®
\$14.04 **\$12.96**

WATER SYSTEM	MicroClean® Filtration System
LIGHTING	Enhanced
JET PUMPS	
NORTH AMERICA (60 Hz)	2 TheraMax™ 2.5 cont hp (5.1 bhp ²)
EXPORT (50 Hz)	2 TheraMax™ 2.0 cont hp (2.6 bhp ²)
ELECTRICAL REQUIREMENTS*	
NORTH AMERICA (60 Hz)	240 VAC @ 40A, 50A or 60A
EXPORT (50 Hz)	230-240 VAC @ 20A, 30A or 40A
STAINLESS STEEL HEATER	5.5 kW ¹



Bristol™

Seats 5

7' x 7' x 36" (213 cm x 213 cm x 91 cm)



780™ series



DRY WEIGHT	745 lbs (338 kg)
TOTAL FILLED WEIGHT	4,331 lbs (1,965 kg)
AVERAGE SPA VOLUME	350 US gal (1,325 liters)
TOTAL JETS	38
MASSAGE VARIETY	6

Estimated Monthly Cost w/ EcoWrap®
\$13.18 **\$10.80**

WATER SYSTEM	MicroClean® Filtration System
LIGHTING	Enhanced
JET PUMPS	
NORTH AMERICA (60 Hz)	2 TheraMax™ 2.5 cont hp (5.1 bhp ²)
EXPORT (50 Hz)	2 TheraMax™ 2.0 cont hp (2.6 bhp ²)
ELECTRICAL REQUIREMENTS*	
NORTH AMERICA (60 Hz)	240 VAC @ 40A, 50A or 60A
EXPORT (50 Hz)	230-240 VAC @ 20A, 30A or 40A
STAINLESS STEEL HEATER	5.5 kW ¹



Peyton™

Seats 5-6

7' x 7' x 36" (214 cm x 214 cm x 92 cm)



680™ series



DRY WEIGHT	654 lbs (297 kg)
TOTAL FILLED WEIGHT	4,490 lbs (2,037 kg)
AVERAGE SPA VOLUME	340 US gal (1,287 liters)
TOTAL JETS	35

Estimated Monthly Cost
\$14.11

WATER SYSTEM	Traditional Filtration
LIGHTING	Classic
JET PUMPS	
NORTH AMERICA (60 Hz)	2-speed 2.5hp (4.5 bhp ²) 1-speed 2.5hp (4.8 bhp ²)
EXPORT (50 Hz)	2-speed 2.0hp (2.6 bhp ²) 1-speed 2.0hp (3.0 bhp ²)
ELECTRICAL REQUIREMENTS*	
NORTH AMERICA (60 Hz)	240 VAC @ 40A, 50A, or 60A
EXPORT (50 Hz)	230 VAC @ 20A, 30A, or 40A
STAINLESS STEEL HEATER	5.5 kW ¹



Ramona®

Seats 5-6

7'5" x 7'5" x 36" (226 cm x 226 cm x 92 cm)



680™ series



DRY WEIGHT	734 lbs (333 kg)
TOTAL FILLED WEIGHT	5,071 lbs (2,300 kg)
AVERAGE SPA VOLUME	410 US Gal (1,552 Liters)
TOTAL JETS	45

Estimated Monthly Cost
\$15.77

WATER SYSTEM	Traditional Filtration
LIGHTING	Classic
JET PUMPS	
NORTH AMERICA (60 Hz)	2-speed 2.5hp (4.5 bhp ²) 1-speed 2.5hp (4.8 bhp ²)
EXPORT (50 Hz)	2-speed 2.0hp (2.6 bhp ²) 1-speed 2.0hp (3.0 bhp ²)
ELECTRICAL REQUIREMENTS*	
NORTH AMERICA (60 Hz)	240 VAC @ 40A, 50A, or 60A
EXPORT (50 Hz)	230 VAC @ 20A, 30A, or 40A
STAINLESS STEEL HEATER	5.5 kW ¹

¹2.7 KW on 50 Hz export spas.

²Brake horsepower (bhp) is a maximum value measured by the motor manufacturer with no pump installed.

*See manual for additional configurations.

Seats 4-5



Marin® Seats 4-5

6'4" x 7'7" x 34" (193 cm x 231 cm x 86 cm)



880™
series



DRY WEIGHT	803 lbs (364 kg)
TOTAL FILLED WEIGHT	4,222 lbs (1,915 kg)
AVERAGE SPA VOLUME	320 US gal (1,211 liters)
TOTAL JETS	45 + 4 Air Injector Jets
MASSAGE VARIETY	9



Estimated Monthly Cost w/ EcoWrap®
\$12.96 **\$9.79**

WATER SYSTEM	MicroClean® Ultra Filtration System
LIGHTING	Integrated
AIR BLOWER	1.5 hp air pump
JET PUMPS	
NORTH AMERICA (60 Hz)	2 TheraMax™ 2.5 hp (5.1 bhp ²)
EXPORT (50 Hz)	2 TheraMax™ 2.0 hp (2.6 bhp ²)
ELECTRICAL REQUIREMENTS*	
NORTH AMERICA (60 Hz)	240 VAC @ 40A, or 50A
EXPORT (50 Hz)	230 VAC @ 10A, 15A
TITANIUM COIL HEATER	5.5 kW ¹



Montclair™ Seats 4-5

6'3" x 7'7" x 33.5" (191 cm x 231 cm x 85 cm)



780™
series



DRY WEIGHT	790 lbs (358 kg)
TOTAL FILLED WEIGHT	4,251 lbs (1,928 kg)
AVERAGE SPA VOLUME	310 US gal (1,173 liters)
TOTAL JETS	30
MASSAGE VARIETY	6



Estimated Monthly Cost w/ EcoWrap®
\$14.62 **\$11.09**

WATER SYSTEM	MicroClean® Filtration System
LIGHTING	Enhanced
JET PUMPS	
NORTH AMERICA (60 Hz)	2 TheraMax™ 2.5 cont hp (5.1 bhp ²)
EXPORT (50 Hz)	2 TheraMax™ 2.0 cont hp (2.6 bhp ²)
ELECTRICAL REQUIREMENTS*	
NORTH AMERICA (60 Hz)	240 VAC @ 40A, 50A or 60A
EXPORT (50 Hz)	230-240 VAC @ 20A, 30A or 40A
STAINLESS STEEL HEATER	5.5 kW ¹



Prado® Seats 4-5

6'3" x 7' x 34.5" (193 cm x 213 cm x 87 cm)

680™
series



DRY WEIGHT	562 lbs (255 kg)
TOTAL FILLED WEIGHT	4,219 lbs (1,914 kg)
AVERAGE SPA VOLUME	354 US gal (1,340 liters)
TOTAL JETS	23



Estimated Monthly Cost
\$14.54

WATER SYSTEM	Traditional Filtration
LIGHTING	Classic
JET PUMPS	
NORTH AMERICA (60 Hz)	1 TheraFlo™ 1.5 cont hp (1 @ 2 spd, 2.5 bhp ²)
EXPORT (50 Hz)	1 TheraFlo™ 2.0 cont hp (2 spd 3.0 bhp ²)
ELECTRICAL REQUIREMENTS*	
NORTH AMERICA (60 Hz)	120 VAC @ 15A or 240 VAC @ 30A or 40A
EXPORT (50 Hz)	230 VAC @ 20A or 30A
STAINLESS STEEL HEATER	1.0 kW ¹ (120V) or 4.0 kW (240V)



Denali® Seats 4

6'6" dia. x 3' (200 cm dia. x 92 cm)

680™
series



DRY WEIGHT	560 lbs (254 kg)
TOTAL FILLED WEIGHT	3,062 lbs (1,389 kg)
AVERAGE SPA VOLUME	240 US gal (908 liters)
TOTAL JETS	20



Estimated Monthly Cost
\$12.82

WATER SYSTEM	Traditional Filtration
LIGHTING	Standard
JET PUMPS	
NORTH AMERICA (60 Hz)	2-speed 1.5hp (2.5 bhp ²)
EXPORT (50 Hz)	2-speed 2.0hp (3.06 bhp ²)
ELECTRICAL REQUIREMENTS*	
NORTH AMERICA (60 Hz)	120 VAC @ 15A or 240 VAC @ 30A or 40A
EXPORT (50 Hz)	230 VAC @ 20A or 30A
STAINLESS STEEL HEATER	1.0 kW ¹ (120V) or 4.0 kW (240V)

¹ 2.7 KW on 50 Hz export spas.

² Brake horsepower (bhp) is a maximum value measured by the motor manufacturer with no pump installed.

*See manual for additional configurations.

Seats 2-3



Capri® Seats 2-3

5'9" x 6'10" x 30.5" (175 cm x 208 cm x 77 cm)

DRY WEIGHT	635 lbs (288 kg)
TOTAL FILLED WEIGHT	3,262 lbs (1,480 kg)
AVERAGE SPA VOLUME	230 US gal (909 liters)
TOTAL JETS	31 + 8 Air Injector Jets
MASSAGE VARIETY	9



Estimated Monthly Cost w/ EcoWrap®
\$10.80 **\$8.86**

880™
series



WATER SYSTEM	MicroClean® Ultra Filtration System
LIGHTING	Integrated
AIR BLOWER	1.5 hp air pump
JET PUMPS	
NORTH AMERICA (60 Hz)	1 TheraMax™ 2.5 hp (5.1 bhp ²)
EXPORT (50 Hz)	1 TheraMax™ 2.0 hp (2.6 bhp ²)
ELECTRICAL REQUIREMENTS*	
NORTH AMERICA (60 Hz)	240 VAC @ 40A, or 50A
EXPORT (50 Hz)	230 VAC @ 10A, 15A
TITANIUM COIL HEATER	5.5 kW ¹



Dover™ Seats 2-3

5'9" x 6'10" x 30.5" (175 cm x 208 cm x 77 cm)

DRY WEIGHT	620 lbs (281 kg)
TOTAL FILLED WEIGHT	3,247 lbs (1,473 kg)
AVERAGE SPA VOLUME	230 US gal (871 liters)
TOTAL JETS	23
MASSAGE VARIETY	5



Estimated Monthly Cost w/ EcoWrap®
\$12.74 **\$10.22**

780™
series



WATER SYSTEM	MicroClean® Filtration System
LIGHTING	Enhanced
JET PUMPS	
NORTH AMERICA (60 Hz)	1 TheraMax™ 1.5 cont hp (2 spd, 4.8 bhp ²)
EXPORT (50 Hz)	1 TheraMax™ 2.0 cont hp (2 spd 3.0 bhp ²)
ELECTRICAL REQUIREMENTS*	
NORTH AMERICA (60 Hz)	120 VAC @ 15A or 240 VAC @ 30A, or 40A
EXPORT (50 Hz)	230 VAC @ 20A, or 30A
STAINLESS STEEL HEATER	1.0 kW ¹ (120V) or 4.0 kW (240V)



Alicia™ Seats 2-3

6'3" x 5'5" x 32" (193 cm x 168 cm x 81 cm)

DRY WEIGHT	492 lbs (223 kg)
TOTAL FILLED WEIGHT	2,780 lbs (1,261 kg)
AVERAGE SPA VOLUME	220 US gal (833 Liters)
TOTAL JETS	19



Estimated Monthly Cost
TBD

680™
series



WATER SYSTEM	Traditional Filtration
LIGHTING	Standard
JET PUMPS	
NORTH AMERICA (60 Hz)	2-speed 1.5hp (2.5 bhp ²)
EXPORT (50 Hz)	2-speed 2.0hp (3.06 bhp ²)
ELECTRICAL REQUIREMENTS*	
NORTH AMERICA (60 Hz)	120 VAC @ 15A or 240 VAC @ 30A or 40A
EXPORT (50 Hz)	230-240 VAC @ 1x20A or 2x16A
STAINLESS STEEL HEATER	1.0 kW ¹ (120V) or 4.0 kW (240V)

¹2.7 KW on 50 Hz export spas.

²Brake horsepower (bhp) is a maximum value measured by the motor manufacturer with no pump installed. *See manual for additional configurations.

Color Palette

Whether you're charmed by soothing shades or bold hues, selecting the perfect color combination starts with a pleasing palette that blends seamlessly with your backyard décor.

Covers

SunStrong® Covers



*25% lighter for easier handling and an added premium touch to your outdoor décor. Standard on 880™, 780™ and 680™ Series spas

SunStrong® Extreme Covers



Premium outdoor covers. Designed for cold harsh climates. Standard on 980™ Series spas. Optional upgrade on 880™, 780™ and 680™ Series spas.

Feature

- 25% lighter*
- Water resistant
- Superior UV resistance properties

- Dense foam supports heavy snow loads
- Angled to promote run-off
- Water and stain resistant to provide a simple wipe clean surface
- Superior UV resistance properties

Foam Density

1.5 lbs.

2 lbs.

Material

SunStrong® Outdoor all-weather fabric

SunStrong® Outdoor all-weather fabric

Taper



4 in. - 2.25 in.



5 in. - 3 in.

Cover Handles

6 Exterior + 2 Interior

6 Exterior + 2 Interior

Finish

Double stitched outdoor thread made from strong UV resistant fibers

Double stitched outdoor thread made from strong UV resistant fibers



Gray



Sienna



Black

Acrylic Shells



Porcelain



Celestite



Platinum



Sahara



Midnight



Monaco

Cabinetry

980™ Series
Exclusives

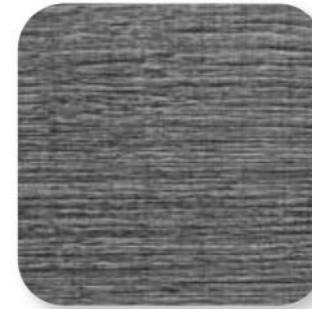


Coastal



Mahogany

SunSide™
880™ Series
Exclusives



Vintage Oak



Modern Hardwood



Brushed Gray

SunStrong®
780™ & 680™ Series



Autumn Walnut



Coastal



Mahogany

Genuine Parts & Accessories

Engineered specifically to optimize your experience, Sundance® Genuine Parts and Accessories prolong the enjoyment of your spa, letting you focus on the way you and your family feel when you use your Sundance® spa.



Pillows

Created to purposefully pose the body in a relaxing position to maximize the benefits of hydrotherapy, Sundance® Spas headrests and replacement pillow sets are an easy way to quickly update your spa.



Cover Lifts

The hydraulic cover lift incorporates a gas-assisted lift and a sleek, durable aluminum frame to make moving and storing your spa cover effortless.

The manual cover lift is engineered from a sleek, durable aluminum frame and makes it easier to move and store your spa cover.



VersaStep™ Spa Steps

This simple, expandable modular system features slip-free recessed traction pads made from surfboard treat, is constructed with a durable aluminum frame, and coordinates with Sundance® spa cabinetry options and resists fading, rotting, and cracks.



Spa Side Umbrellas

Square, maximum sun-coverage design made of high-quality, all weather fabric and dual tilt 360-degree rotation. Includes aluminum frame and base.



Sundance® Spas

Sundance Spas, Inc.
14525 Monte Vista Ave., Chino, CA 91710
800-883-7727

www.sundancespas.com 6890-043H 01/21

©2021 Sundance Spas, Inc. All rights reserved.

Sundance® is a registered trademark of Sundance Spas, Inc. All other brands, product names, company names, trade names and trademarks used are the property of their respective owners. Sundance may add to change or remove any part of these materials at any time, without notice. Reproduction in whole or in part without written permission is prohibited. International products may be configured differently to meet local electrical requirements. Dimensions are approximate.



MIX
Paper from
responsible sources
FSC® C103525

Printed in the United States.